

School Uniforms and Dress Code

School Uniforms

At Great Hearts, the student uniform is an essential part of who we are and what we do. The uniform serves to unify our students as one community of learners, irrespective of our diverse backgrounds. The uniform also signifies to the larger community our common purpose and identity as learners in pursuit of the true, the good, and the beautiful. Finally, the uniform frees our students to pursue their intellectual and moral development as individuals, without the distractions of fad and fashion. True individuality is formed in the heart and mind, not in appearances.

Uniforms are available for purchase at Anton or Dennis Uniforms.

Bottoms:

- Khaki dress slacks or shorts with black or brown dress belt.
- Girls may wear school plaid skirts (from vendor).
- Skirts and shorts shall be no shorter than just above the knee.

Tops:

- Middle School: white or navy blue polo, short or long sleeved, with embroidered school crest, tucked into waistband. White undershirts are permitted.
- High School: yellow polo or white or light blue Oxford, short or long sleeved, with embroidered school crest, tucked into waistband. White undershirts are permitted. Sophomores may wear the school tie. Juniors and seniors may wear the school blazer or letterman jacket.
- Campus pullover or athletic jacket with school crest or approved emblem.

Footwear:

- Shoes must be solid black or brown. Athletic shoes or dress shoes are permitted.
- Socks must be solid black, white, or navy blue.
- Girls may wear solid black, white, or navy blue knee highs or tights with skirts.

Accessories:

- One bracelet, one pair of small earrings, one ring, and one simple watch are allowed. Smartwatches and facial piercings are not allowed.
- Non-academy outerwear may be worn outside before and after school and must be free of pop-culture, political messages, and/or inappropriate messages.
- Headwear and sunglasses may not be worn inside the school buildings. Exceptions will be announced.

Hygiene and personal care:

- Hair must be a naturally occurring color and clean, styled, and out of the face. Neatly groomed facial hair is permitted.
- Hair accessories should be small and match the uniform.
- Students will bear no tattoos, temporary or permanent, including pen and ink writing and drawings on the skin or face.
- Girls may wear make-up but it may not be excessive in its application.

Students must stay in uniform whenever they are on campus during school hours. This means arriving on campus fully in uniform and leaving campus fully in uniform (correct shoes, shirts tucked in, etc.). Students may only change out of uniform after school with teacher/coach permission to participate in an approved curricular or co-curricular activity that requires an immediate change in dress. For religious, cultural, or medical exceptions to the dress code policy, please reach out to the academy's Dean of Academics.

Athletic Practice and School Events

Shirts:

- Shirt must be modest, loose fitting, in good repair (no holes, torn sleeves, cutting of the fabric etc.), and should be worn either tucked in or well over the waist of the pants/shorts if not tucked in.
- No midriffs may be shown.
- T-shirts are preferred—no tank tops, camisoles, or sports bras may be worn as outer-garments.
- Sleeveless shirts may be worn if modest.

Pants/shorts:

- Pants/shorts should be modest, in good repair (no holes, torn sleeves, etc.), and worn at the waist.
- Shorts should be no shorter than mid-thigh, and no-longer than just below the knee
- No short-shorts or long baggy shorts may be worn.
- No boxers or undergarments may be visible.
- No yoga pants for field day.

Attire should be free of inappropriate messages. Sports team logos (e.g., Diamondbacks, Notre Dame), and apparel brand names (e.g., Adidas, Nike) are acceptable, provided they do not make inappropriate allusions. These guidelines also apply to sweatshirts and jackets that students may wear.

Footwear for athletic practices and field days should be athletic in nature: no sandals, open-toed, or platform shoes. Hats and sunscreen may be appropriate if the students will be in the sun. Hat styles should follow the same guidelines as above. If wearing non-athletic wear to a school event, no overly tight or revealing clothing should be worn.

Field Day

Shirts:

- Glendale Prep issued, unaltered House t-shirt
 - Must be school issued
 - Shirts cannot be tied or cut
- GP outerwear is allowed.
- Non-GP outerwear is allowed as long as it is a solid color with no lettering or design, and the logo is no larger than the palm of the hand.

Pants/shorts:

- Athletic pants, leggings, yoga pants, sweatpants/joggers, uniform pants, or uniform shorts permitted
- Athletic shorts must be either mid-thigh or be worn over other pants/shorts reaching to at least mid-thigh
 - No spandex shorts allowed, unless worn under athletic shorts
- Athletic footwear is required
- No uniform skirts

Hats, Face Paint, and Footwear:

- Hats are allowed but the logo must be smaller than the palm of the hand.
- Face paint allowed for decorative embellishments; students are not allowed to paint their entire face.
- Footwear should be athletic in nature: no sandals, open-toed, crocs, or platform shoes.

High School Retreat

Shirts:

- All shirts should be modest, loose fitting, in good repair (no holes, torn sleeves, cutting of the fabric, etc.), and should be worn either tucked in or well over the waist of the pants/shorts if not tucked in.
- No midriffs may be shown.
- T-shirts are preferred— sleeveless shirts may be worn, if modest.
- Camisoles, undershirt tank tops, and sports bras may not be worn as outer-garments.

Pants/shorts:

- Pants/shorts should be modest, in good repair (no holes, no tears, etc.), and worn at the waist.
- Shorts should be no shorter than mid-thigh, and no-longer than just below the knee (no short-shorts or long baggy shorts).
- No boxers or undergarments may be visible.
- Attire should be free of inappropriate messages. Sports team logos (e.g., Diamondbacks, Notre Dame), and apparel brand names (e.g., Adidas, Nike) are acceptable, provided they do not make inappropriate allusions. These guidelines also apply to sweatshirts and jackets that students may wear. No overly tight or revealing clothing should be worn.

Swimsuits:

- May only wear swimsuits when actively swimming; otherwise, a cover-up or t-shirt must be worn
- Modest two-piece swimsuits must have full-coverage bottoms; no cheeky or thong cut bathing suits allowed.

7th/8th Grade Dance – Western themed

Dress code for gentlemen:

- **Pants:**

- Jeans in denim or black.
- Rips or tears in jeans are not allowed
- No jean shorts or cutoffs are allowed
- Opt for well-fitted jeans that have some stretch to ensure ease of movement.
- **Dress shirt:**
 - Collared button-down dress shirt, short or long-sleeved (solid, striped, or checkered only)
 - Must be properly fitted
 - Rips and cutouts are not allowed
 - Must be tucked in at the waist
 - Brown or black belt
- **Shoes:**
 - Dress shoes are approved and must be worn with dress socks (navy, brown, or black) and are to be worn throughout the night
 - Sneakers are approved and must be worn with socks and are to be worn throughout the night
 - Boots with leather soles only are approved and must be worn throughout the night.
 - No bare feet, slippers, flip flops, or sandals
- **Hair:**
 - Must be styled appropriately
 - Must be a natural color
 - Cowboy hats are allowed

Dress code for young ladies:

- **Pants:**
 - Jeans in denim or black.
 - Rips or tears in jeans are not allowed.
 - No jean shorts or cutoffs are allowed.
 - Opt for well-fitted jeans that have some stretch to ensure ease of movement.
- **Shoes:**
 - Sneakers are approved and must be worn with socks and are to be worn throughout the night
 - Boots with leather soles only are approved and must be worn throughout the night.
 - No bare feet, slippers, flip flops, or sandals
- **Hair:**
 - Must be styled appropriately
 - Must be a natural color
 - Cowboy hats are allowed

8th Grade Promotion

Dress code for gentlemen:

- **Pants:**
 - Dress pants of an appropriate length and fit with a belt or suspenders
 - Jeans, shorts, or pants with an exposed back pocket are not allowed

- Rips or tears in pants are not allowed
- **Dress shirt:**
 - Collared long-sleeved button-down dress shirt
 - Deep V-neck shirts are not allowed
 - Rips and cutouts are not allowed
 - Must be tucked in at the waist
- **Tie or bow tie required**
- **Shoes:**
 - Dress shoes must be worn with dress socks and are to be worn throughout the night
 - Sneakers must be worn with socks and are to be worn throughout the night
 - No bare feet, slippers, flip flops, or sandals are allowed
- **Hair:**
 - Must be styled appropriately
 - Must be a natural color

Dress code for young ladies:

- **Skirts or dresses:**
 - Dresses should not be revealing or low cut; they must be modest and tasteful and not have exposed décolletage/cleavage.
 - Dresses must be no shorter than mid-thigh– this includes when the young lady is dancing, moving, or bending
 - Cap-sleeve, spaghetti straps, and tank-top dresses/tops are allowed
 - Strapless dresses/tops are not allowed
 - Bare midriffs are **not** allowed, nor are cut outs (front, sides, or back), including ones that have see-through, sheer, or illusion fabrics
 - Dresses must not have exposed décolletage/cleavage
 - “Body-con” dresses are not allowed
 - Backs of dresses/tops are not allowed to dip lower than the base of the shoulder blade
- **Pants:**
 - Appropriately fitted dress pants are allowed in lieu of a dress or skirt
- **Shoes:**
 - Dress shoes or sneakers are allowed and must be worn throughout the night – no bare feet
- **Hair:**
 - Must be styled appropriately
 - Must be a natural color

Homecoming and Winter Dance

Dress code for gentlemen:

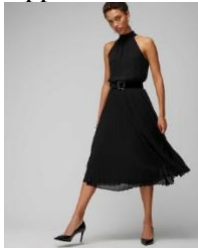
- **Pants:**
 - Dress pants of an appropriate length and fit with a belt
 - Jeans, shorts, or pants with an exposed back pocket are not allowed
 - Rips or tears in pants are not allowed
- **Dress shirt:**
 - Collared button-down dress shirt
 - Must be properly fitted

- Deep V-neck shirts are not allowed
- Rips and cutouts are not allowed
- Must be tucked in at the waist
- **Tie or bow tie required**
- **Shoes:**
 - Dress shoes must be worn with dress socks and are to be worn throughout the night
 - Sneakers must be worn with socks and are to be worn throughout the night
 - No bare feet, slippers, flip flops, or sandals are allowed
- **Hair:**
 - Must be styled appropriately
 - Must be a natural color

Dress code for young ladies:

- **Skirts or dresses:**
 - Hemlines must be no higher than mid-thigh – this includes when the young lady is dancing, moving, or bending. Slits may not go above the mid-thigh.
 - Cap-sleeve, spaghetti straps, one-shoulder, halter strap, and tank-top dresses/tops are allowed
 - Strapless dresses/tops are not allowed
 - Bare midriffs are **not** allowed, nor are cut outs (front, sides, or back), including ones that have see-through, sheer, or illusion fabrics
 - Dresses must not have exposed décolletage/cleavage
 - “Body-con” dresses are not allowed
 - Backs of dresses/tops are not allowed to dip lower than the base of the shoulder blade
- **Pants:**
 - Appropriately fitted dress pants are allowed in lieu of a dress or skirt
- **Shoes:**
 - Dress shoes or sneakers are allowed and must be worn throughout the night – no bare feet
- **Hair:**
 - Must be styled appropriately
 - Must be a natural color

Approved halter style dresses:



Unapproved halter style dresses:



Unapproved body con style dresses:



Approved dresses:



Prom

Dress code for gentlemen:

- **Tuxedo:**
 - Black-tie and white-tie attire are strongly encouraged.
 - A formal tuxedo is strongly encouraged.
 - No colored tuxedos allowed – black is the only acceptable color.
 - Ties, vests, and cummerbunds (if worn) may be colored, if desired.
 - Dress shirt required.
 - Black dress shoes are required and must remain on the feet the entire evening.
 - **If you arrive at the prom in a tuxedo that does not meet any of the above requirements, you will be asked to go home to change before returning to Prom.**
- **Suit:**
 - Tuxedos are preferred.
 - Black, navy, gray, or cream suits are acceptable.
 - Suits must be properly-fitting.

- Pants and coat must be the same color and made of the same material.
- Dress shirt required.
- Tasteful tie required.
- **If you arrive at the prom in a suit that does not meet any of the above requirements, you will be asked to go home to change before returning to Prom.**
- **Shoes and Socks:**
 - Black or brown dress shoes required. Shoes must remain on the feet the entire evening.
 - Solid colored dress socks similar in color to pants are required.
- **Hair:**
 - Hair must be a naturally occurring color and be clean, styled, and out of the face. No dyed hair permitted.
 - Hair must be trimmed appropriately.

Dress code for young ladies:

- **Dress:**
 - ⊖ Gowns must be tea-length (mid-calf) or full-length.
 - Gowns should not be revealing or low cut; they must be modest and tasteful and not have exposed décolletage/cleavage.
 - Strapless, cap-sleeve, spaghetti strap, one-shoulder, halter strap (as long as the chest is covered) and tank-top gowns are permitted.
 - Bare midriffs are **not** permitted, nor are any cut outs (front, sides, or back), including ones that have see-through, sheer, or illusion fabrics unless a solid material is behind them.
 - If the back of the gown dips lower than mid-back, the dress must be approved by administration at least two weeks prior to Prom.
 - Open backs are not appropriate.
 - Gown slits should be modest and no higher than mid-thigh.
 - **If you arrive at the prom in a dress that does not meet any of the above requirements, you will be asked to go home to change before returning to Prom.**
- **Shoes:**
 - Dress shoes are required and must remain on the feet the entire evening.
- **Manicures:**
 - Manicures that do not conform to GP Student Handbook may be worn the week of Prom and must be removed within a week after prom.
- **Hair:**
 - Must be styled appropriately
 - Must be a natural color

Choral Concerts

The required concert attire for all students in the choral concert is all black for both boys and girls, as follows. This includes all MUS 9 & MUS 10 students, and all middle school and high school enrichment choirs other than Concert Choir and Chamber Singers.

Failure to follow the required dress code will result in a lowered grade for MUS 9 and MUS 10 students. If the student cannot remedy the clothing on their own to an acceptable level, they may be prohibited from participating in the event. If you have any further questions, please let the teacher know.

Both BOYS and GIRLS must wear BLACK DRESS SHOES in the concert: no sneakers, flip flops, boots, or other casual footwear. Heels of any kind must be very low. For girls, open-toed dress shoes are permitted.

Dress code for gentlemen:

- Black long-sleeved collared dress shirts (no tie)
- Black slacks with black belt
- Jewelry must follow guidelines of the academic day

Dress code for young ladies:

- Black dress, or black blouse with black skirt (or long dress slacks).
- Dresses/skirts must extend to the middle of the shin or longer
- Sleeve length must be cap-sleeve or longer
- Front necklines must be no more than four fingers below the collarbone
- The back must be completely covered to the base of the neck
- No cutouts or slits anywhere on clothing
- A non-transparent black shawl or sweater may be worn to bring the outfit within dress code
- Jewelry and makeup must follow guidelines of the academic day
- All girls' clothing must be properly fitted and not be overly form-fitting, therefore, tube dresses, elasticized skin-tight dresses or skirts (e.g. bodycon), or similar styles are not to be worn

Attire must be professional, modest, and follow the spirit and letter of Glendale Prep's dress code guidelines if not describe above.

Boys' hair must be cut, styled according to dress code. Girls' hair must be pulled back from the face. This does not need to be harsh, but face must be clearly visible without requiring hands to brush it away.

Instrumental Concerts

Both BOYS and GIRLS must wear BLACK DRESS SHOES in the concert, not sneakers, flip flops, boots not allowed during the academic day, or other casual footwear. Heels must be very low. For girls, open-toed dress shoes are permitted.

Dress code for gentlemen:

- White long-sleeved collared dress shirt
- Black necktie, black slacks, and black belt
- Jewelry must follow guidelines of the academic day

Dress code for young ladies:

- All-black dress, or white blouse with black skirt (or long dress slacks)
- Dresses/skirts must extend to the middle of the shin or longer
- Sleeve length must be cap-sleeve or longer
- Front necklines must be no more than four fingers below the collarbone

- The back must be completely covered to the base of the neck
- No cutouts or slits anywhere on clothing
- A non-transparent white shawl or sweater may be worn to bring the outfit within dress code
- Jewelry and makeup must follow guidelines of the academic day
- All girls' clothing must be sized appropriately and not overly form-fitting, therefore, tube dresses, elasticized skin-tight dresses or skirts (e.g. bodycon), or similar styles are not to be worn